

# LWC-700/720 Series Low Level Cut Off and Pump Up Control

- ▶ Internal Mounting
- ▶ Meets CSD1 Requirements
- ▶ U.L. Recognized "Limit Control"
- ▶ Compact Size
- ▶ Options Include: Manual Reset, Power Outage Feature, and Test Feature

Gems LWC-700 is designed for boiler low-water cutoff protection, and offers the most compact internally mounting package for boiler and steam generators. The 720 Series includes the low-water cutoff function and adds Pump Up control for more sophisticated and convenient automation. For added safety, the sensor assembly incorporates redundant reed switches at the actuation level. The LWC-700 and LWC-720 Series are ideal for R.O., distilled, or deionized water systems.

### Optional Features:

- Power Outage feature allows for resets after nuisance power outages;
- Reset Button feature to be used when device has been deactivated due to low water condition. A Reset is activated only after water has returned to normal level.

### Specifications

Wetted Materials	
<b>Stem, Mounting, Collars</b>	Brass or Stainless Steel
<b>Float Assembly</b>	316 Stainless Steel
<b>Pressure Rating</b>	150 PSI (1034 KPA)
<b>Temperature Range</b>	0°F to 305°F (-18°C to 151°C); 350°F (176°C) max. intermittent
<b>Float Acceptable Overtravel</b>	1/16" to 1/4" (1.6 mm to 6.5 mm) on Closure; 1/16" (1.6 mm) min. on Opening
<b>Mounting Attitude</b>	Vertical, J-Box Up
<b>Controller</b>	
<b>Contacts</b>	SPDT, Dry Contacts
<b>Contact Ratings</b>	10A @ 120/220/240 VAC Resistive (120°F/49°C) 1A @ 120, 208/240, 240 Resistive (150°F/66°C) 1/3 HP @ 120, 208/240, 240 VAC
<b>Secondary Circuit</b>	2.3 VAC RMS, <1 mA
<b>Sensitivity</b>	10K
<b>Ambient Temperature</b>	-40°F to +150°F (-40°C to +66°C)
<b>Time Delay</b>	0.5 Seconds on Rising Level
<b>Approvals</b>	UL Recognized per UL-353, Limit Controls (for supply voltages of 120 VAC or less)

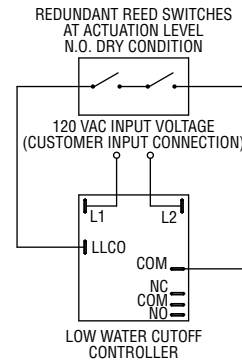


720 Series shown

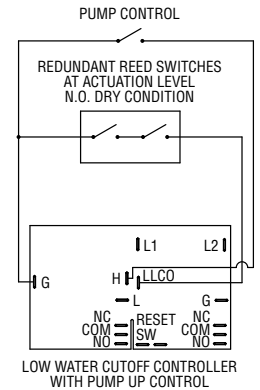
WARRICK CONDUCTIVITY SENSORS

### Switch Actuation

700 Series



720 Series

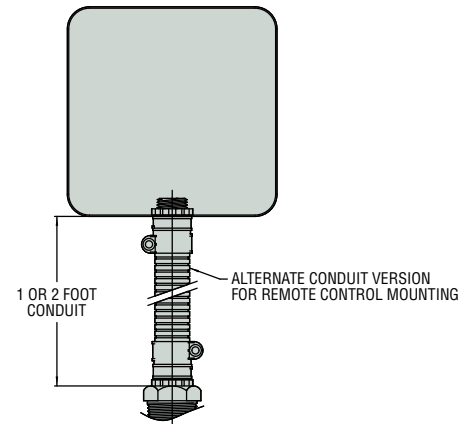


### Mounting Types

Type 1 1" NPT	Type 2 1-5/16"-12UNF-2A <sup>1</sup>

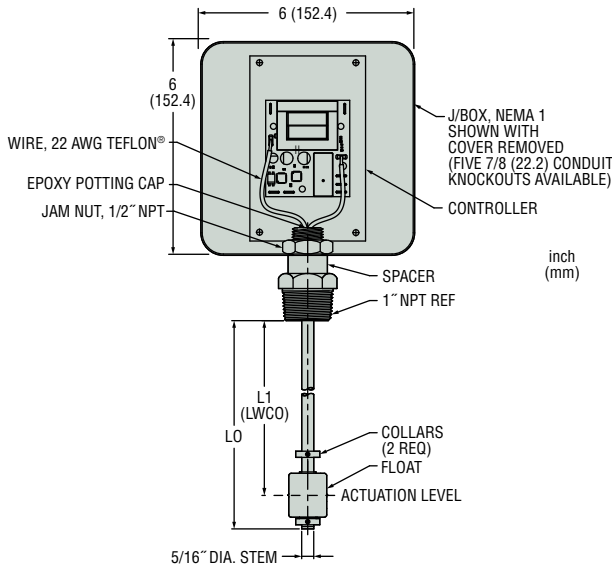
Notes:  
1. Mounting plug dimensions per SAE J1926.

### Conduit Option

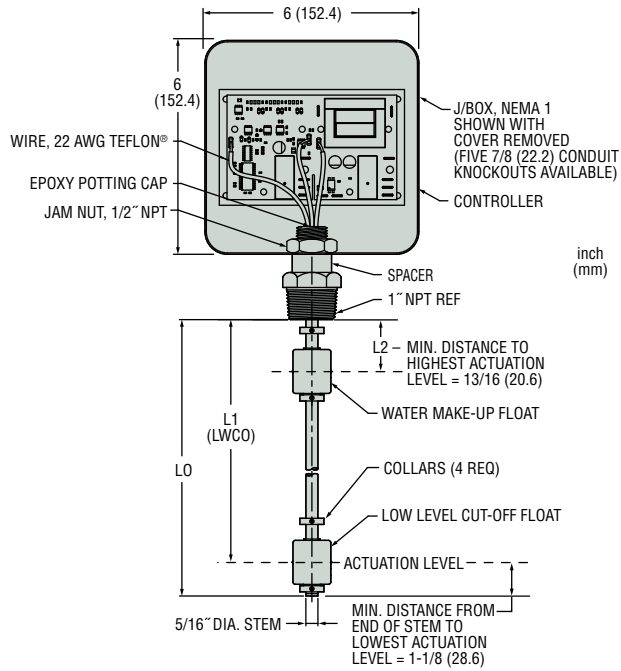


## Dimensions

### 700 Series



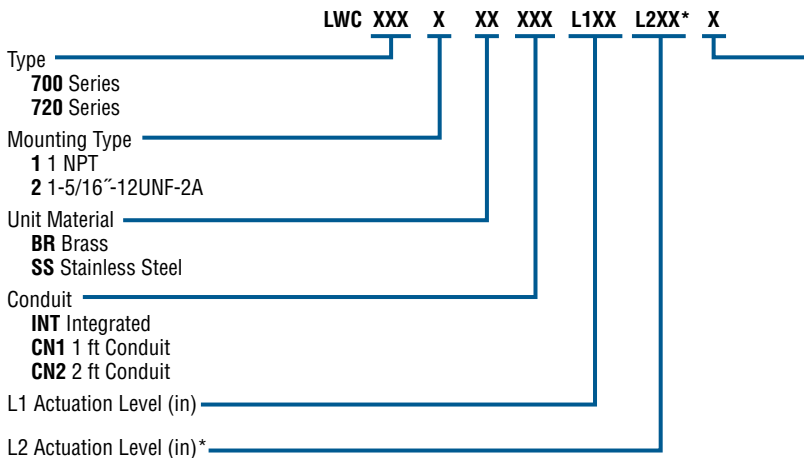
### 720 Series



**Note:** Actuation levels are calibrated on ascending fluid levels.

## How to Order

Use the **Bold** characters from the chart below to construct a product code.



\* Used for 720 Series only; leave blank for 700 Series.

- Actuation level distances and LO (Length Overall) are measured from the inner surface of the mounting plug.
- $LO = L1 + 1-1/8"$  (28.6mm)
- L2 may be no less than 2 inches (50.8mm) from L1 actuation level.

#### Notes:

1. Dimensions based on liquid specific gravity of 1.0.
2. Tolerance on actuation levels is  $\pm 1/8"$  (3.2mm).

#### Control Options

##### 700 Series

Control Options			Part No. Code
N.C. Pushbutton	Power Outage	Test Feature	
•			C
	•		E
		•	B
•	•		F
•		•	Y
	•	•	Z
•	•	•	A

##### 720 Series

Control Options			Part No. Code
N.C. Pushbutton	Power Outage	Test Feature	
•			S
	•		K
		•	B
•	•		G
•		•	Y
	•	•	Z
•	•	•	A